

# awards

peter elliott architecture + urban design

**2016 aia national architecture award: education**  
commendation

GGs School for Performing Arts & Creative Education



**aia bates smart award for architecture in the media**

Episodic Urbanism:  
The RMIT Urban Spaces Project 1996-2015



**aia heritage award john george knight award**

RMIT Building 11  
Old Melbourne Gaol Chapel & Entrance Buildings



**aia educational architecture award**  
architecture award

GGs School for Performing Arts & Creative Education



**2015 aia urban design award architecture award for urban design**

RMIT A'Beckett Temporary Urban Square



**aia sustainable architecture award**  
commendation

RMIT A'Beckett Temporary Urban Square



**australia award for urban design - small scale**  
commendation

RMIT A'Beckett Temporary Urban Square



**mornington peninsula heritage award**  
restoration of a heritage place - excellence

McCraith House Refurbishment



**atw tapestry design prize for architects**  
third prize winner

M80 Ring Road Upgrade



• • • • • **2014 aia urban design award**  
architecture award for urban design

• • • • • M80 Ring Road & M2  
Tullamarine Freeway  
Interchange for Vicroads



• • • • • **2012 aia national urban design award**

walter burley griffin award

• • • • • RMIT University Lawn  
Precinct



**aia national urban design national commendation**

William Buckley Bridge,  
Barwon Heads



**intergrain timber vision awards**

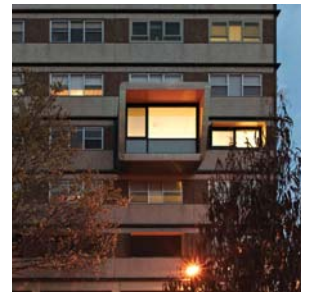
landscape award

William Buckley Bridge,  
Barwon Heads



**aia small projects award**  
architecture award

Tower Turnaround 'Hi-Pod' prototype (with BKK Architects)



**aia urban design award**  
architecture award for urban design

RMIT University Lawn  
Precinct



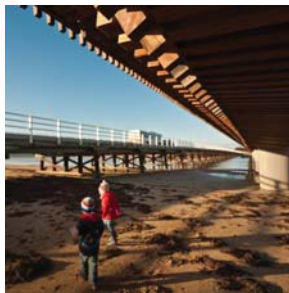
**aia urban design award**  
joseph reed award for urban design

William Buckley Bridge,  
Barwon Heads



**victorian coastal awards**  
coastal building & design award

William Buckley Bridge,  
Barwon Heads



• • • • • **2010 asi steel clad structures building design award**

• • • • • Deer Park Bypass for  
VicRoads



**aia creative innovations steel design award**

Deer Park Bypass for  
VicRoads



**aia urban design award**  
architecture award for urban design

Deer Park Bypass for  
VicRoads



**aia colorbond award for steel architecture**  
architecture award

Deer Park Bypass for  
VicRoads





. . . . . **2010 aia institutional alterations & extensions award**  
 . . . . . architecture award  
 . . . . . RMIT University - Building 9 Rooftop Extension



**aia heritage award**  
 john george knight award  
 RMIT University - Building 9 Rooftop Extension



. . . . . **2008 aia the adelaide prize**  
 . . . . . Glenelg Tramline Extension, Adelaide  
 . . . . . (with Taylor Cullity Lethlean and Ian Dryden)



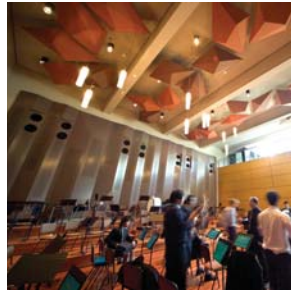
**bdp australia**  
 urban design award

North Terrace  
 Redevelopment, Adelaide  
 (with Taylor Cullity Lethlean)



. . . . . **2006 aia national award**  
 . . . . . iachlan macquarie award for heritage

Memorial Hall  
 Melbourne Grammar School Senior School, South Yarra



**aia national merit award**  
 landscape architecture - design category

North Terrace  
 Redevelopment Stage 1, Adelaide  
 (with Taylor Cullity Lethlean)



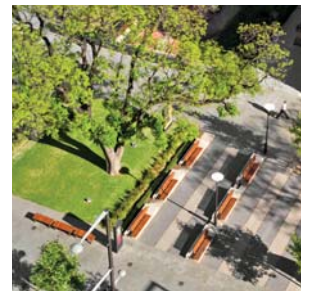
**aia institutional award**  
 architecture award  
 Memorial Hall  
 Melbourne Grammar School Senior School, South Yarra



**aia the regional prize**  
 Latrobe University Visual Arts Centre, Bendigo



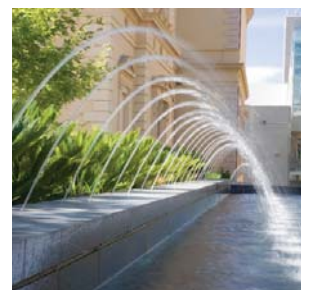
**aia the adelaide prize**  
 North Terrace  
 Redevelopment, Adelaide  
 (with Taylor Cullity Lethlean)



. . . . . **2005 c&caa public domain awards**  
 . . . . . streets category - winner  
 . . . . . North Terrace Redevelopment, Adelaide  
 . . . . . (with Taylor Cullity Lethlean)



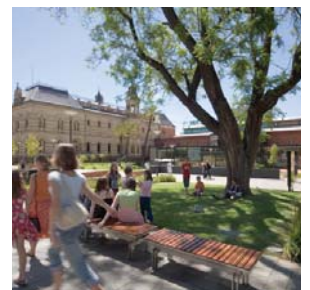
**c&caa public domain awards**  
 precincts category - commendation  
 North Terrace  
 Redevelopment, Adelaide  
 (with Taylor Cullity Lethlean)



**bdp australia**  
 urban design award  
 North Terrace  
 Redevelopment, Adelaide  
 (with Taylor Cullity Lethlean)



**aia project award**  
 design excellence  
 North Terrace  
 Redevelopment Stage 1, Adelaide  
 (with Taylor Cullity Lethlean)



. . . . . **2004 aia institutional award**  
 . . . . . architecture award  
 . . . . .  
 . . . . . Victoria University, Victoria  
 . . . . . Law School



**aia heritage architecture**  
 architecture award  
 RMIT University, Building 20



. . . . . **2003 c&caa public domain**  
 . . . . . **awards**  
 . . . . . precincts category -  
 . . . . . commendation  
 . . . . .  
 . . . . . RMIT University Urban  
 . . . . . Spaces Project Stages  
 . . . . . 1 + 2



. . . . . **2002 australian timber design**  
 . . . . . **awards**  
 . . . . . highly commended  
 . . . . .  
 . . . . . Riawunna Aboriginal  
 . . . . . Education Centre  
 . . . . . The University of Tasmania,  
 . . . . . Launceston



. . . . . **2001 aia national**  
 . . . . . **public buildings**  
 . . . . . commendation  
 . . . . .  
 . . . . . Faculty of Arts Precinct  
 . . . . . The University of Tasmania,  
 . . . . . Launceston



**aia (tasmania)**  
**public buildings**  
 merit  
 Faculty of Arts Precinct  
 The University of Tasmania,  
 Launceston



**aia institutional award**  
 commendation  
 Centenary Building,  
 Melbourne Grammar School



. . . . . **2000 the bdp urban design**  
 . . . . . **award**  
 . . . . . commendation  
 . . . . .  
 . . . . . RMIT University Urban  
 . . . . . Spaces Project Stage 1  
 . . . . . (with City of Melbourne City  
 . . . . . Projects Division)



**aia national award**  
 walter burley griffin award for  
 urban design  
 RMIT University Urban  
 Spaces Project Stage 1  
 (with City of Melbourne City  
 Projects Division)



**aia urban design**  
 joseph reed award  
 RMIT University Urban  
 Spaces Project Stage 1  
 (with City of Melbourne City  
 Projects Division)



**aia the melbourne prize**  
 The Observatory Gate,  
 Royal Botanic Gardens,  
 Melbourne





**aia institutional award**  
merit

The Observatory Gate,  
Royal Botanic Gardens,  
Melbourne



**aisc architectural steel**  
**design award**

architecture award

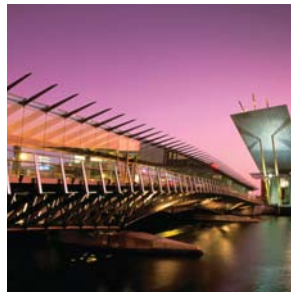
Spencer Street Footbridge



. . . . .  
. . . . .  
. . . . .  
. . . . .  
. . . . .  
. . . . .  
. . . . .  
. . . . .  
. . . . .  
. . . . .  
. . . . .  
. . . . .  
. . . . .  
. . . . .  
. . . . .

**1999 australia council**  
**of building design**  
**professions - urban**  
**design in australia award**  
commendation

Spencer Street Footbridge



**aia urban design award**  
commendation

Spencer Street Footbridge



. . . . .  
. . . . .  
. . . . .  
. . . . .  
. . . . .  
. . . . .  
. . . . .  
. . . . .  
. . . . .  
. . . . .  
. . . . .  
. . . . .  
. . . . .  
. . . . .  
. . . . .

**1998 aia national award**  
lachlan macquarie award for  
conservation

State Government Office  
2 Treasury Place, East  
Melbourne



**aia institutional award**  
merit

State Government Office  
2 Treasury Place, East  
Melbourne



**aia conservation**  
john george knight award

State Government Office  
2 Treasury Place, East  
Melbourne



**aia the melbourne prize**  
commendation

State Government Office  
2 Treasury Place, East  
Melbourne



**property council of**  
**australia award**  
refurbished buildings

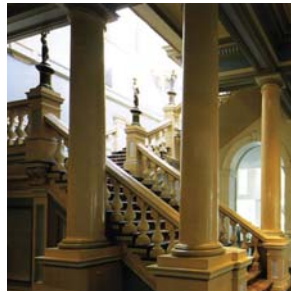
Ballarat Town Hall  
Refurbishment



. . . . .  
. . . . .  
. . . . .  
. . . . .  
. . . . .  
. . . . .  
. . . . .  
. . . . .  
. . . . .  
. . . . .  
. . . . .  
. . . . .  
. . . . .  
. . . . .  
. . . . .

**1997 aia institutional award**  
william wardell award

Ballarat Town Hall  
Refurbishment



**aia urban design award**  
merit

Collective Projects  
The University of Melbourne



**aia commercial award**  
commendation

Robbie Barker Hair Salon,  
Toorak



**1996 aia new institutional award**  
merit

Robert Clark Horticulture Centre, Ballarat



**1995 aia new housing award**  
commendation

St. Mary's College, Principal Residence  
The University of Melbourne



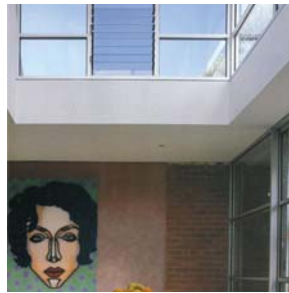
**aisc victoria architecture steel design award for buildings**

The Robert Clark Horticultural Centre, Ballarat



**1992 aia national award**  
interior architecture award

Minchin Apartment, Fitzroy



**aia interior architecture award**  
merit

Minchin Apartment, Fitzroy



**1991 aia victorian award**  
architecture medal

Carlton Baths & Community Centre



**aia new institutional award**  
merit

Carlton Baths & Community Centre



**bhp steel profile architecture of the decade awards 1981 - 1991**  
highly commended

Carlton Baths & Community Centre



**bhp steel sheet & coil products division & metal building**  
merit

Carlton Baths & Community Centre



**1988 aia conservation award**  
merit

Osborne House, Fitzroy  
Rooming house  
(for the Ministry of Housing and Construction)



**1987 aia rejuvenated housing award**  
merit

Professor George Seddon Residence, Richmond



